

TRYTON SIDE BRANCH STENT™

A 3D anatomical illustration of a bifurcation stent system. The main vessel is shown in a cross-section, with a side branch branching off. A silver, mesh-like stent is deployed across the bifurcation, covering the main vessel and the side branch. The stent has a complex, interconnected structure. The background is a dark blue with a large, stylized 'Y' shape in a lighter blue, representing the bifurcation. The overall image is set against a dark red background at the top and bottom.

# PROTECT and SECURE

TRYTON  
Medical

A NEW CLASS BIFURCATION SYSTEM

# A NEW CLASS BIFURCATION SYSTEM



The Tryton Side Branch Stent™ with **Tri-zone™ Technology** is the new class bifurcation system to actively treat, protect and secure bifurcations for optimal flow and predictable angiographic outcomes.

**ZONE 3 MAIN BRANCH**  
Minimal metal and an open architecture to seamlessly integrate with your main vessel treatment

**ZONE 2 TRANSITION**  
Provides radial strength and complete coverage to side branch and ostium regardless of bifurcation angle and geometry

**ZONE 1 SIDE BRANCH**  
Superior scaffolding secures the side branch and delivers the performance you expect from your workhorse stent

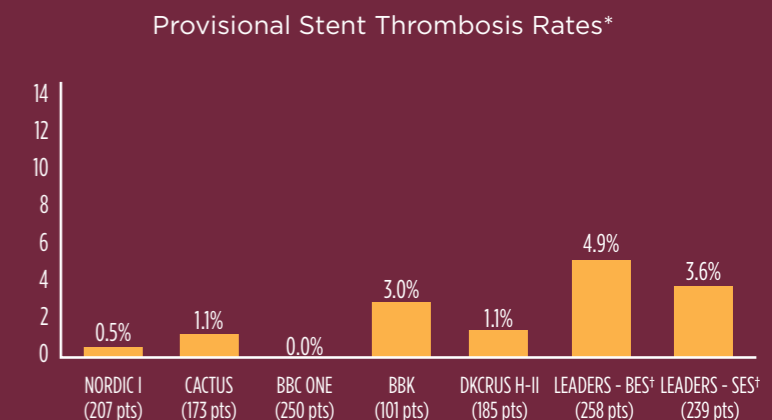
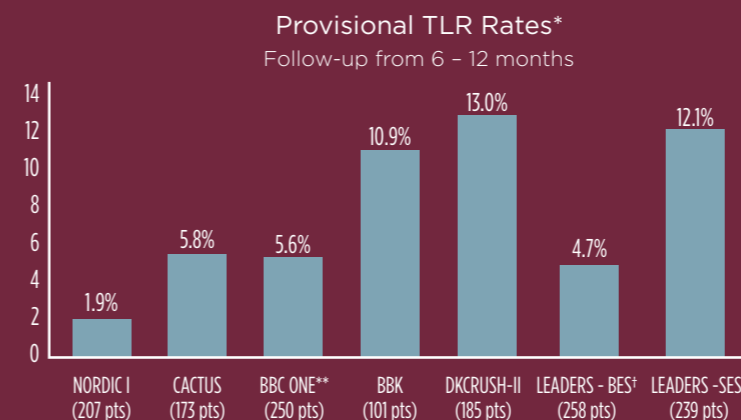
**TRYTON**  
SIDE BRANCH STENT™

## MAKE NO SACRIFICE

### BIFURCATION TRIALS

Current Provisional Stenting Clinical Trials Report:

- TLR rates up to 13%
- Stent thrombosis up to 4.9%



\*\*TVF rate indicated. †Combined 1 and 2 stent strategy.

# A NEW CLASS BIFURCATION SYSTEM



The Tryton Side Branch Stent™ with **Tri-zone™ Technology** is the new class bifurcation system to actively treat, protect and secure bifurcations for optimal flow and predictable angiographic outcomes.

ZONE  
**3**

### MAIN BRANCH

Minimal metal and an open architecture to seamlessly integrate with your main vessel treatment

ZONE  
**2**

### TRANSITION

Provides radial strength and complete coverage to side branch and ostium regardless of bifurcation angle and geometry

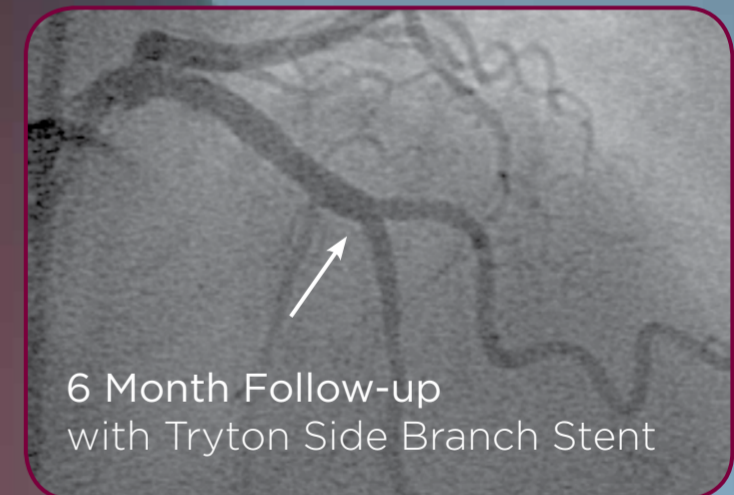
ZONE  
**1**

### SIDE BRANCH

Superior scaffolding secures the side branch and delivers the performance you expect from your workhorse stent

**TRYTON**  
SIDE BRANCH STENT™

## Tryton *integrates* with the main vessel DES

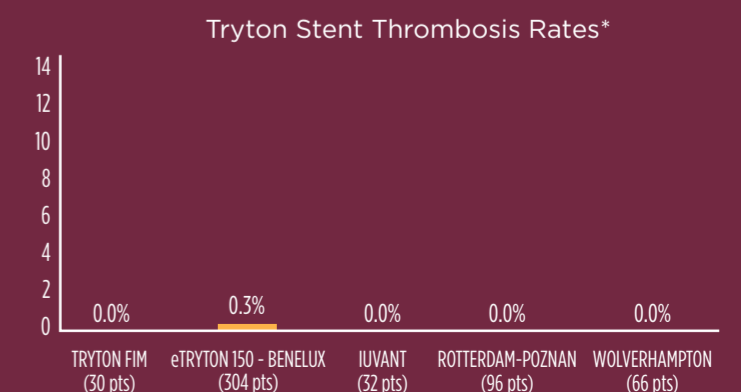
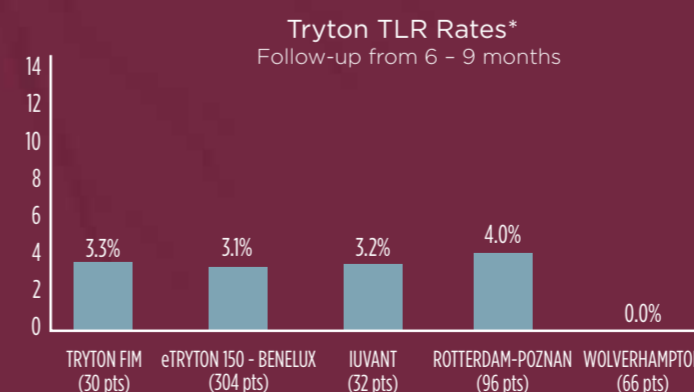


Images courtesy of Ralf Müller, M.D. and Prof. Eberhard Grube, M.D. (Siegburg, Germany)

## PREDICTABLE OUTCOMES

Tryton's Side Branch Stent Offers Durable Clinical DES-Like Results:

- Low TLR rates across five registries
- Low stent thrombosis rate of 0.3%



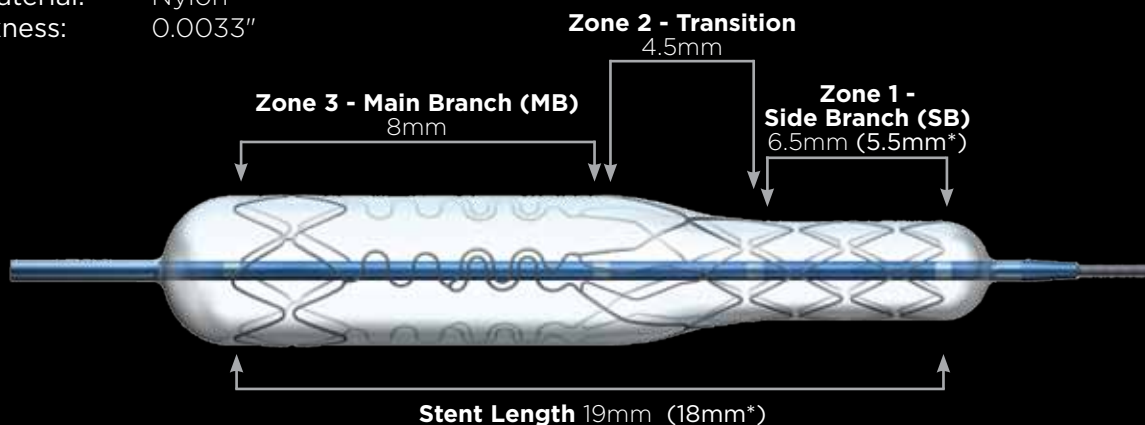
\*Data on File at Tryton Medical, Inc.

# PROTECT and SECURE

## A NEW CLASS BIFURCATION SYSTEM

Balloon	Diameter (mm) SB - MB	Length (mm)	Recommended Guiding Catheter (mm)	Maximum Post-expansion diameter (mm)		Nominal Pressure (atm)	RBP (atm)	Reference Number
				SB	MB			
Straight	2.5 - 2.5	19	5F	3.0	4.0	8	14	T5-2525-191
Step	2.5 - 3.0	19	5F	3.0	4.0	10	14	T5-2530-191
Step	2.5 - 3.5	19	5F	3.0	4.0	10	14	T5-2535-191
<b>NEW: Larger Sizes</b>								
Step	3.0 - 3.5	18	6F	4.0	4.5	10	14	T5-3035-181
Step	3.5 - 4.0	18	6F	4.0	4.5	8	14	T5-3540-181

Stent material: Cobalt Chromium (CoCr)  
 Marker material: Platinum/Iridium  
 Balloon material: Nylon  
 Strut thickness: 0.0033"



\*For larger stent diameter sizes 3.0 - 3.5mm and 3.5 - 4.0mm.

Investigational in the US and not approved in Japan. The Tryton Side Branch Stent System is available for Sale in Europe.

Corporate Headquarters  
 1000 Park Forty Plaza,  
 Suite 325  
 Durham, NC 27713 USA  
 Phone: +1.919.226.1490  
 Fax: +1.919-226-1497

Tryton Medical B.V.  
 Centaurusweg 123  
 5015TC Tilburg, The Netherlands

**TRYTON**  
 Medical

For more information please contact us at [www.trytonmedical.com](http://www.trytonmedical.com)

©2011 Tryton Medical, Inc. All rights reserved. D2016G\_V03